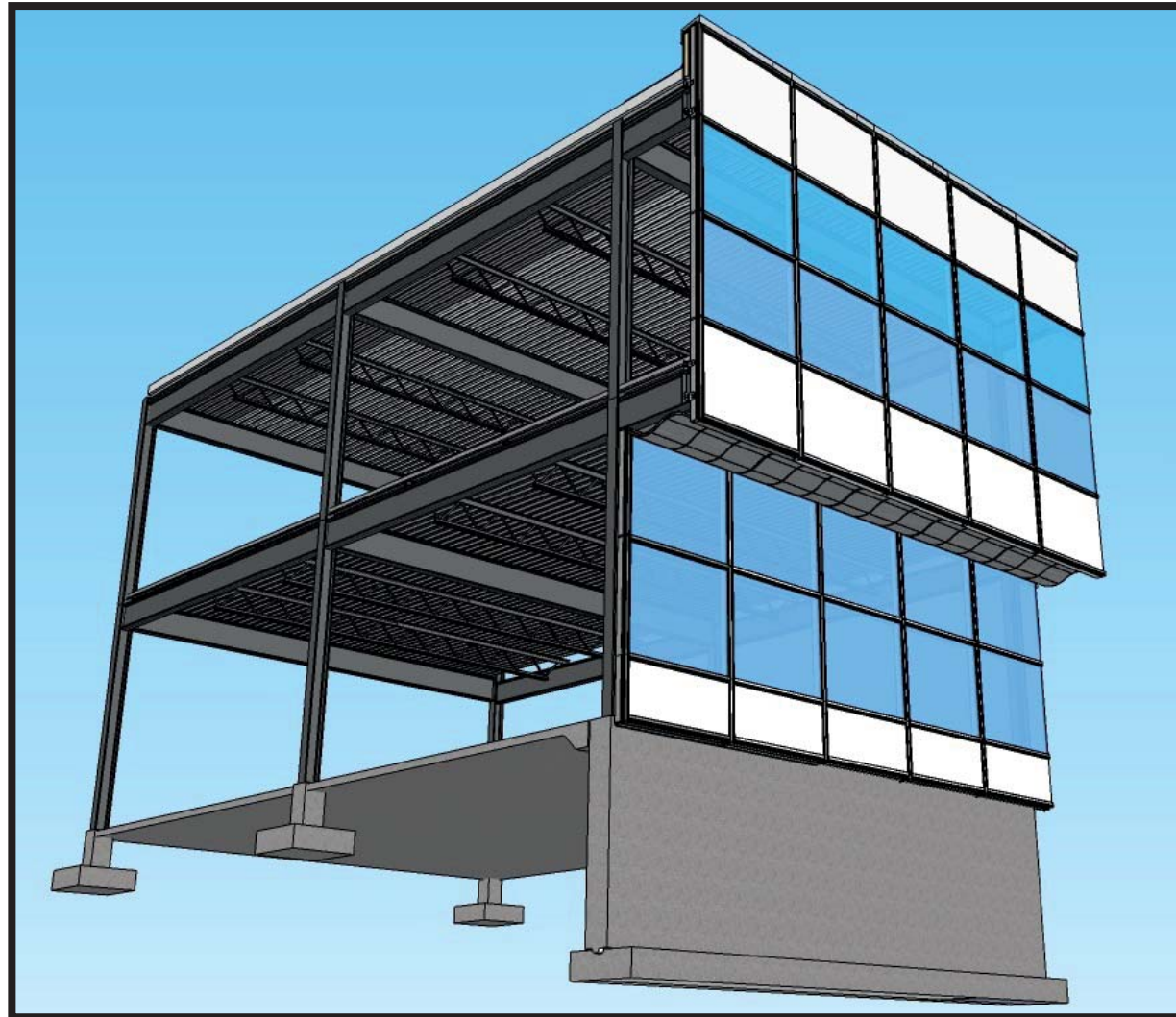


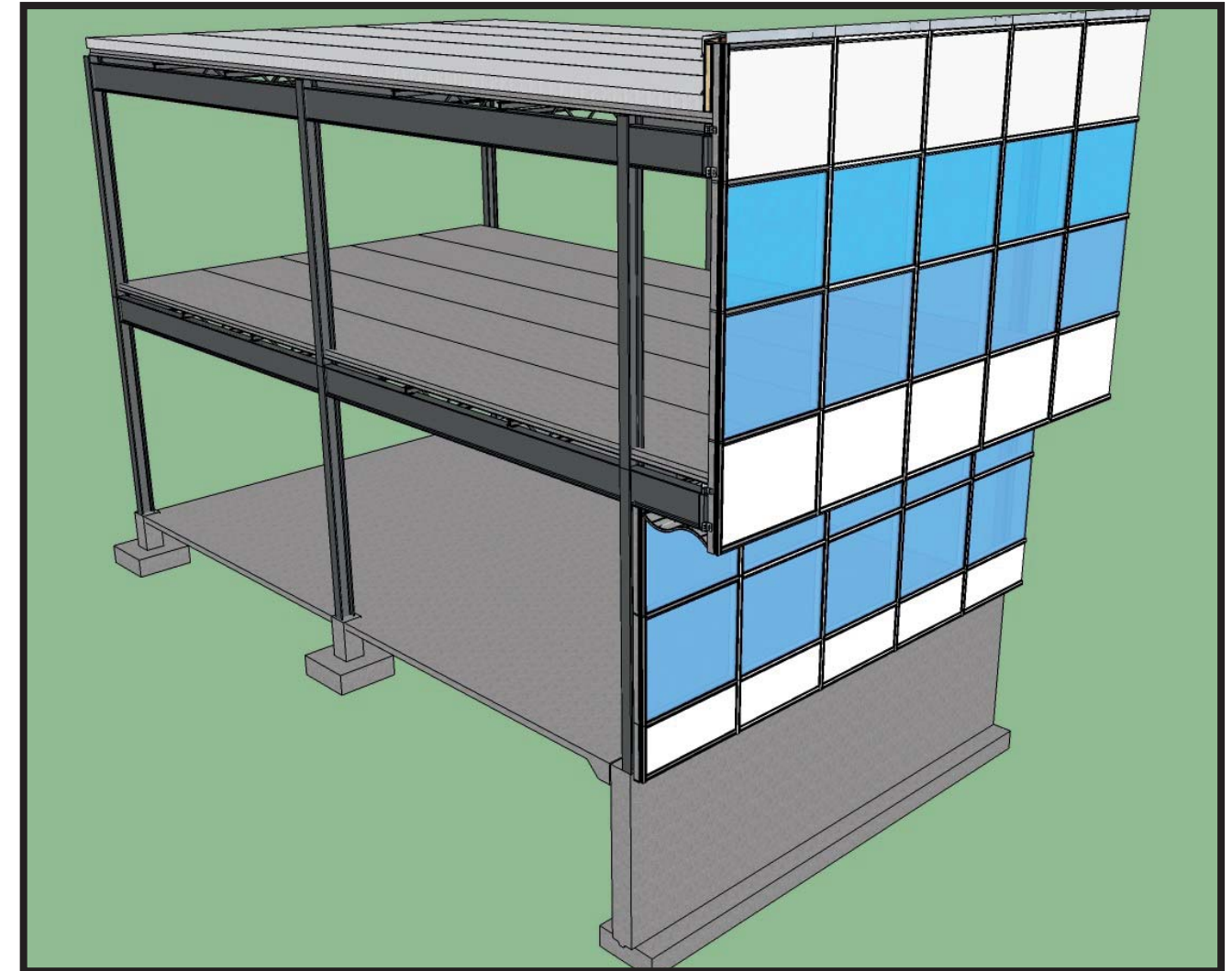
STRUCTURES FOR ARCHITECTS I

Assignment ii



AXONOMETRIC 3D RENDER

1:100

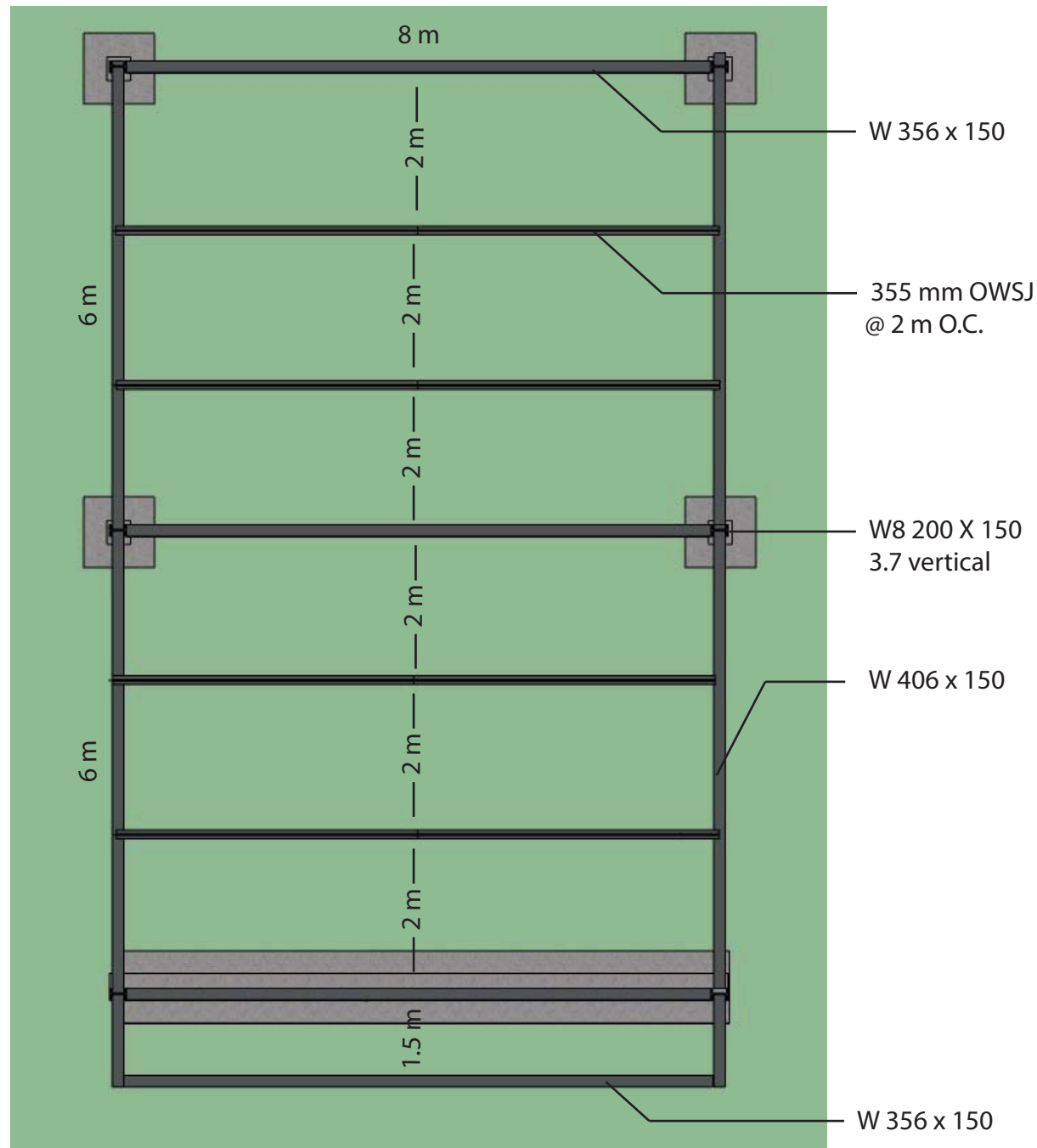


AXONOMETRIC 3D RENDER

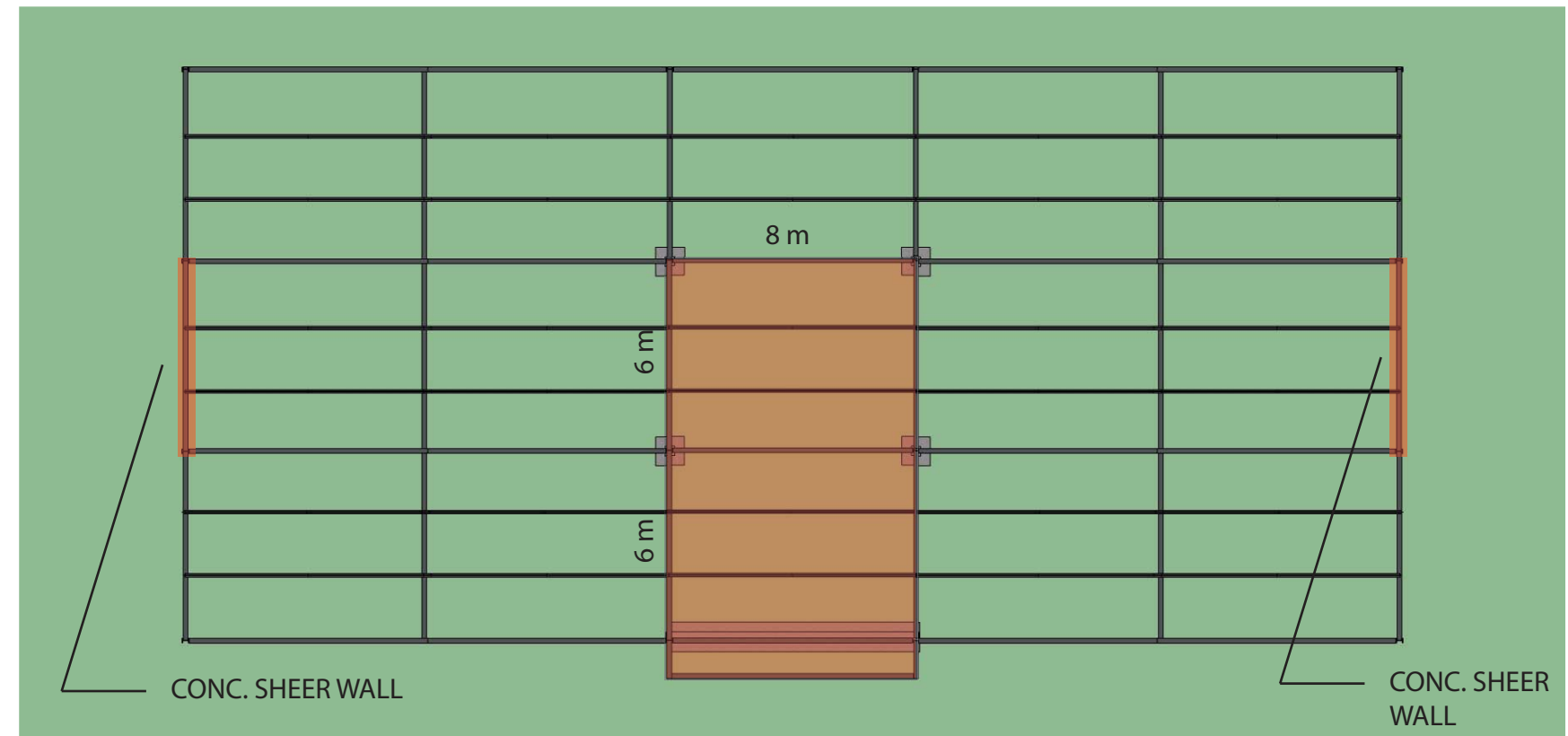
1:100

STRUCTURES FOR ARCHITECTS I

Assignment ii



Deck Size : 38 mm
Slab Size : 102 mm



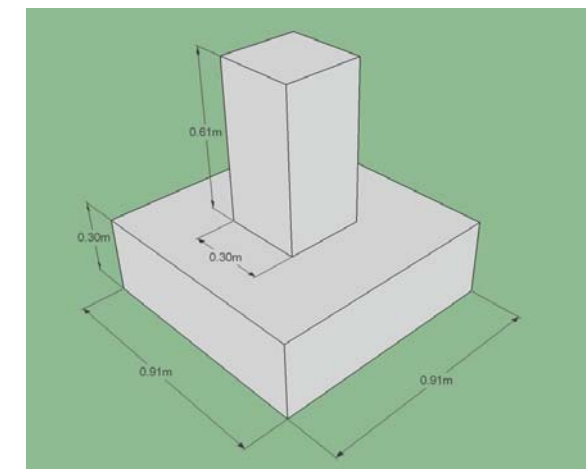
TYPICAL FLOOR CONSTRUCTION :

- 102 mm CONC. SLAB ON
- 38 mm METAL DECKING
- 355 O.W.S.J. (OPEN WEB STEEL JOIST) 200 mm O.C.
- 41 METAL FURRING @ 610 O.C. PERP. TO METAL CHANNELS
- 16 TYPE 'X' GYPSUM BOARD

COMPONENTS :

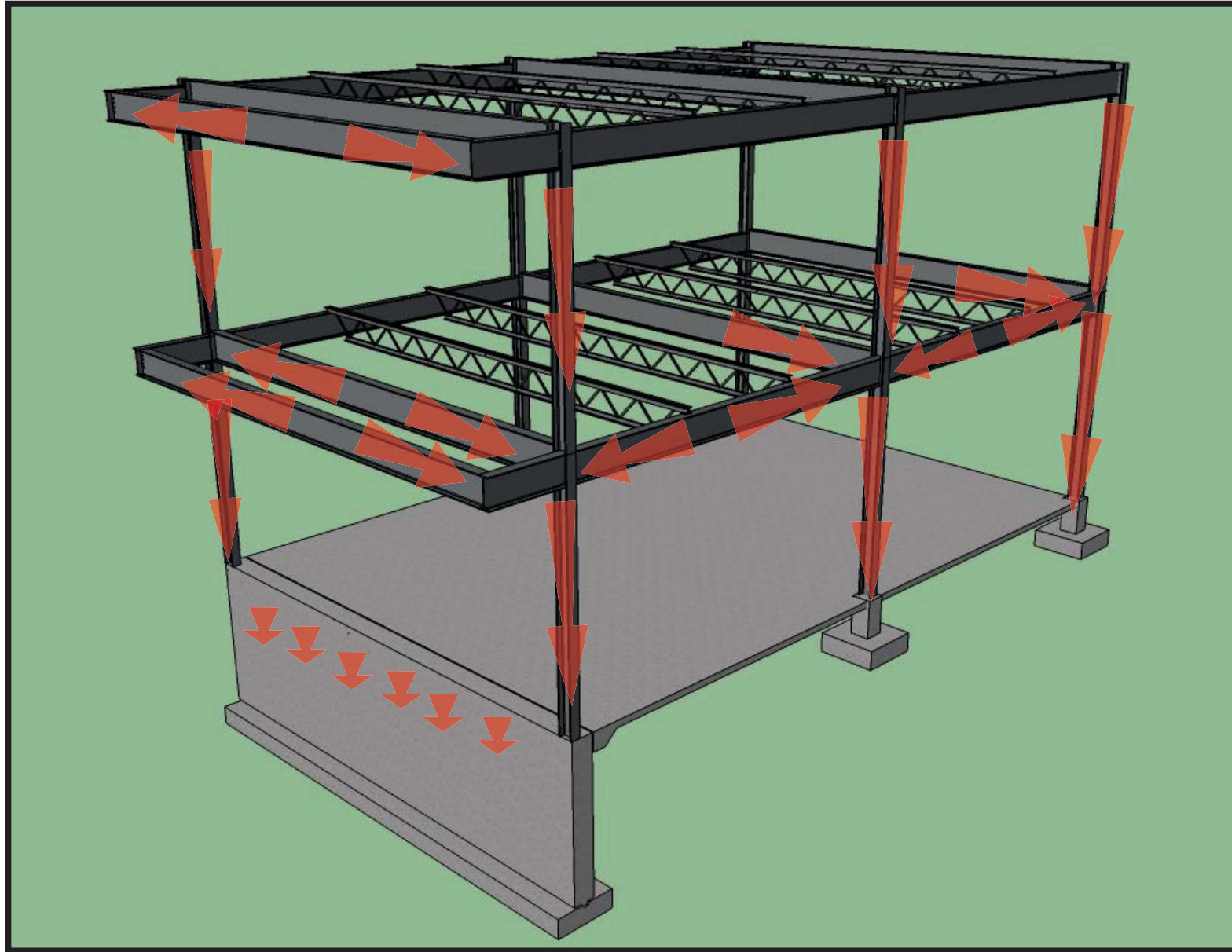
- 8m x 6m Bays
- W8 Steel Columns: 200mm x 150 mm
- Steel Beams: W 356 x 150 and W 406 x 150

CURTAIN WALL SYSTEM : KAWNEER : 1600 S1
SEE SPECS.



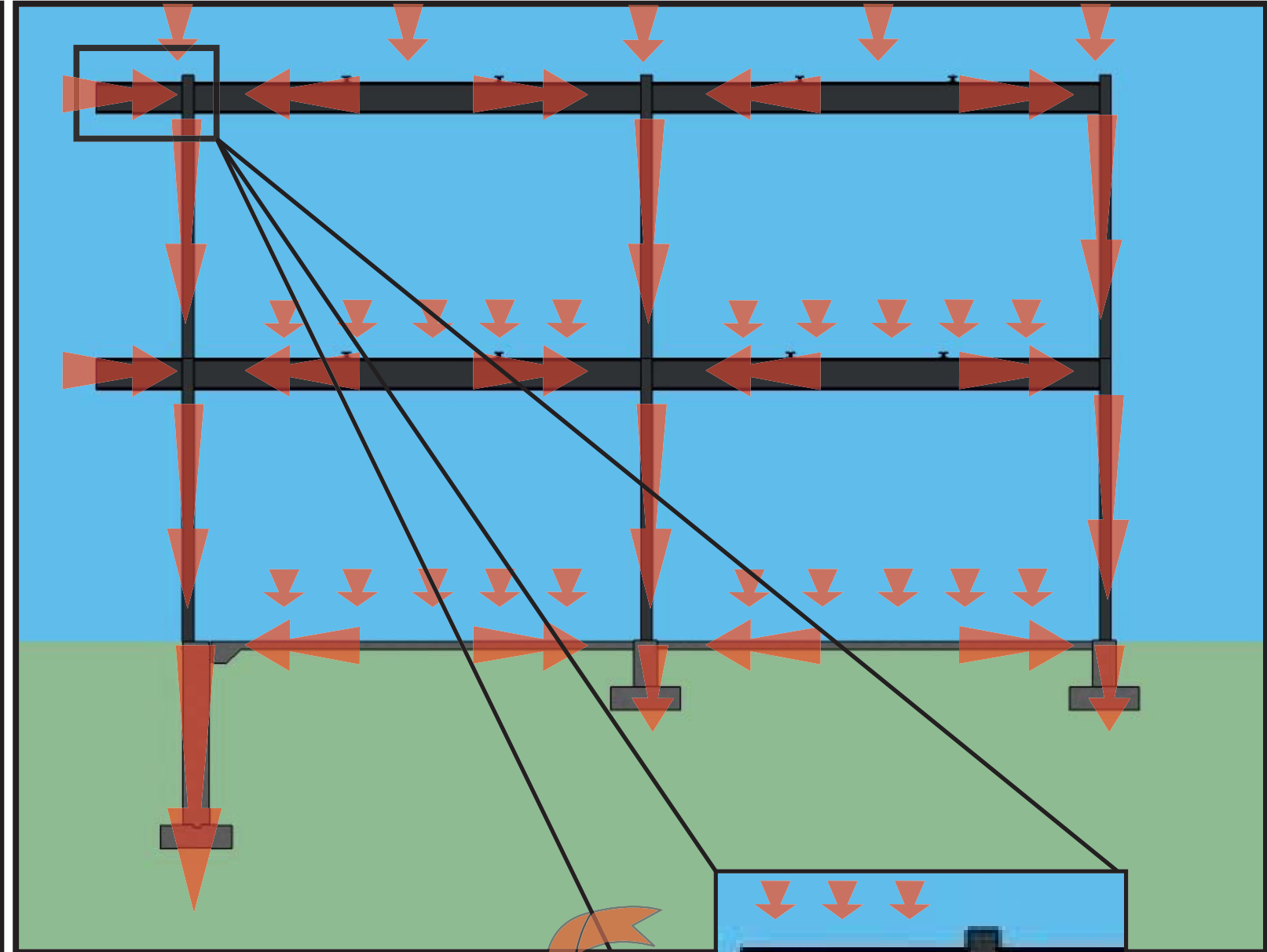
STRUCTURES FOR ARCHITECTS I

LOAD PATH DIAGRAM

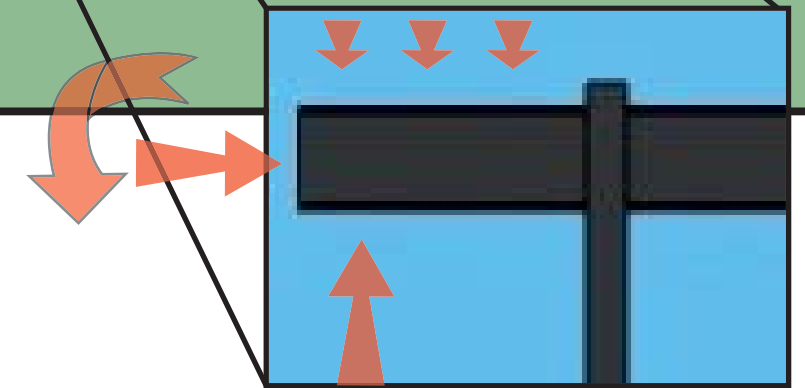


LOAD PATH DIAGRAM

SCALE : 1:50



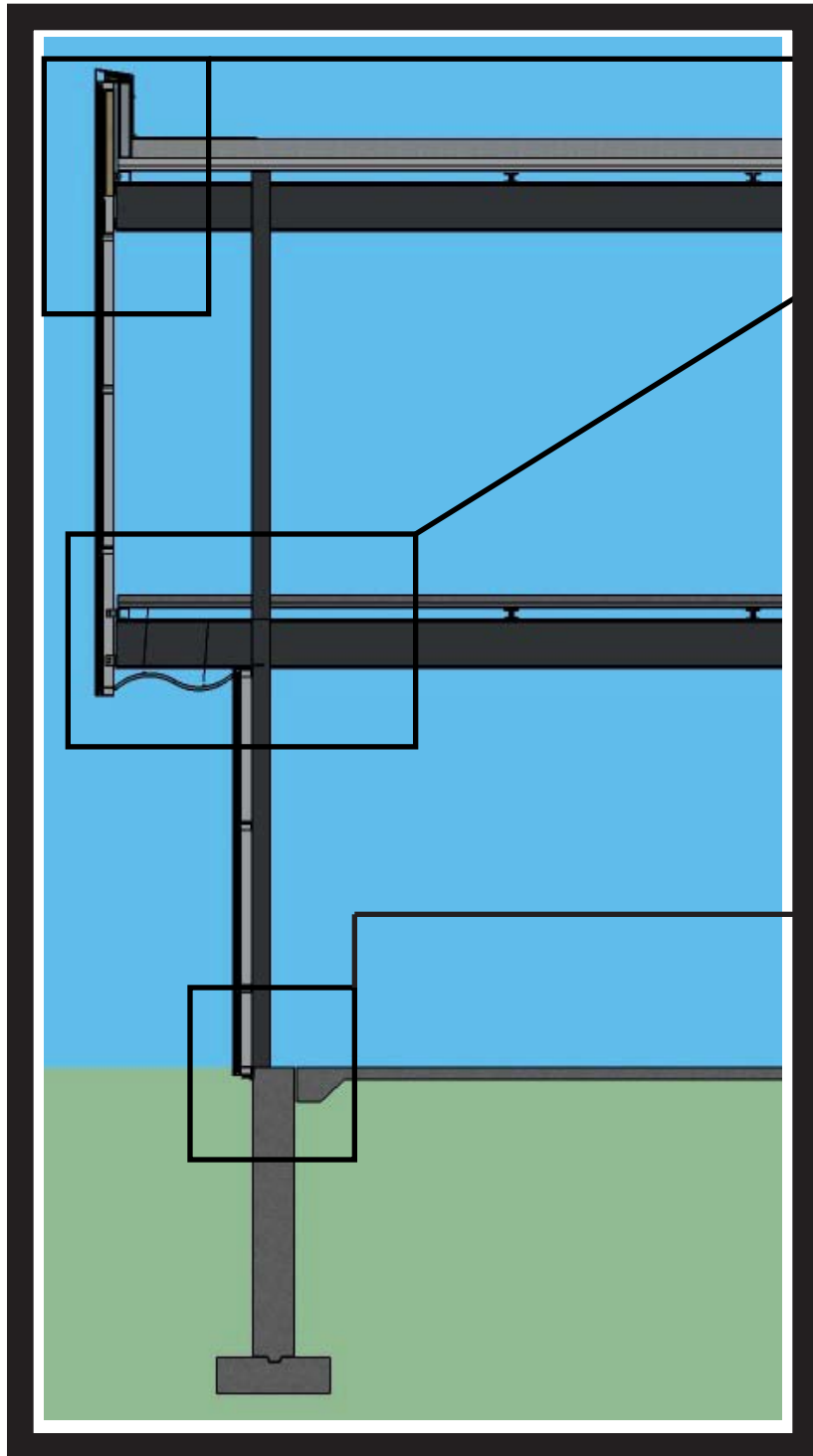
LOAD PATH DIAGRAM



FREE BODY DIAGRAM

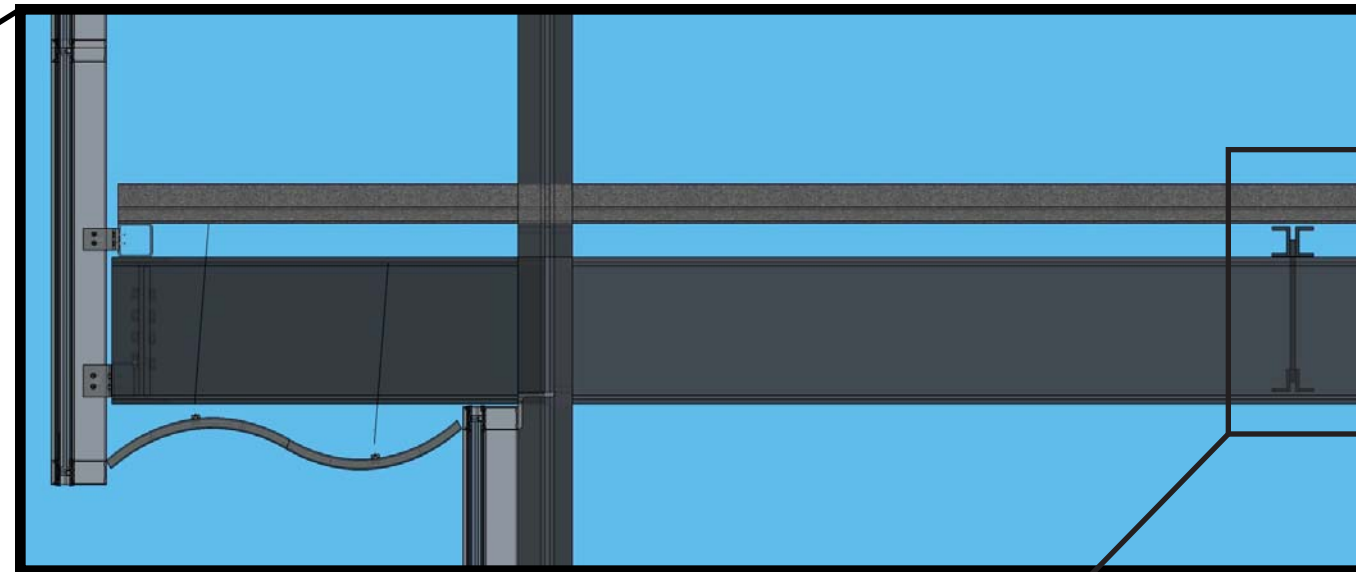
STRUCTURES FOR ARCHITECTS I

CONNECTIONS DETAILS



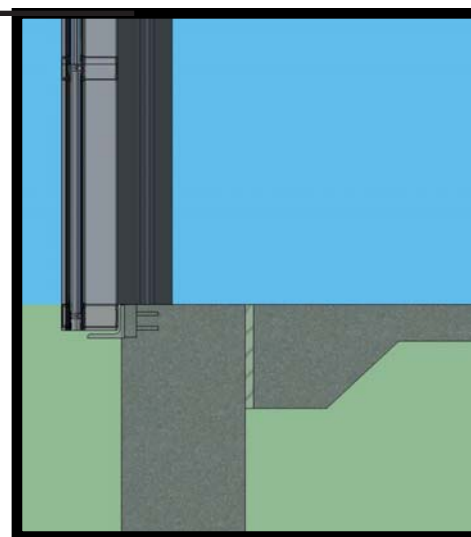
WALL SECTION AT CURTAIN WALL

SCALE : 1:150

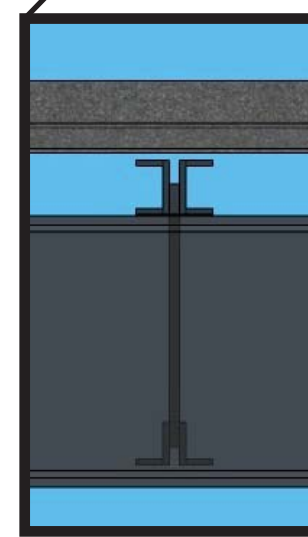


CURTAIN WALL AT CANTILEVER

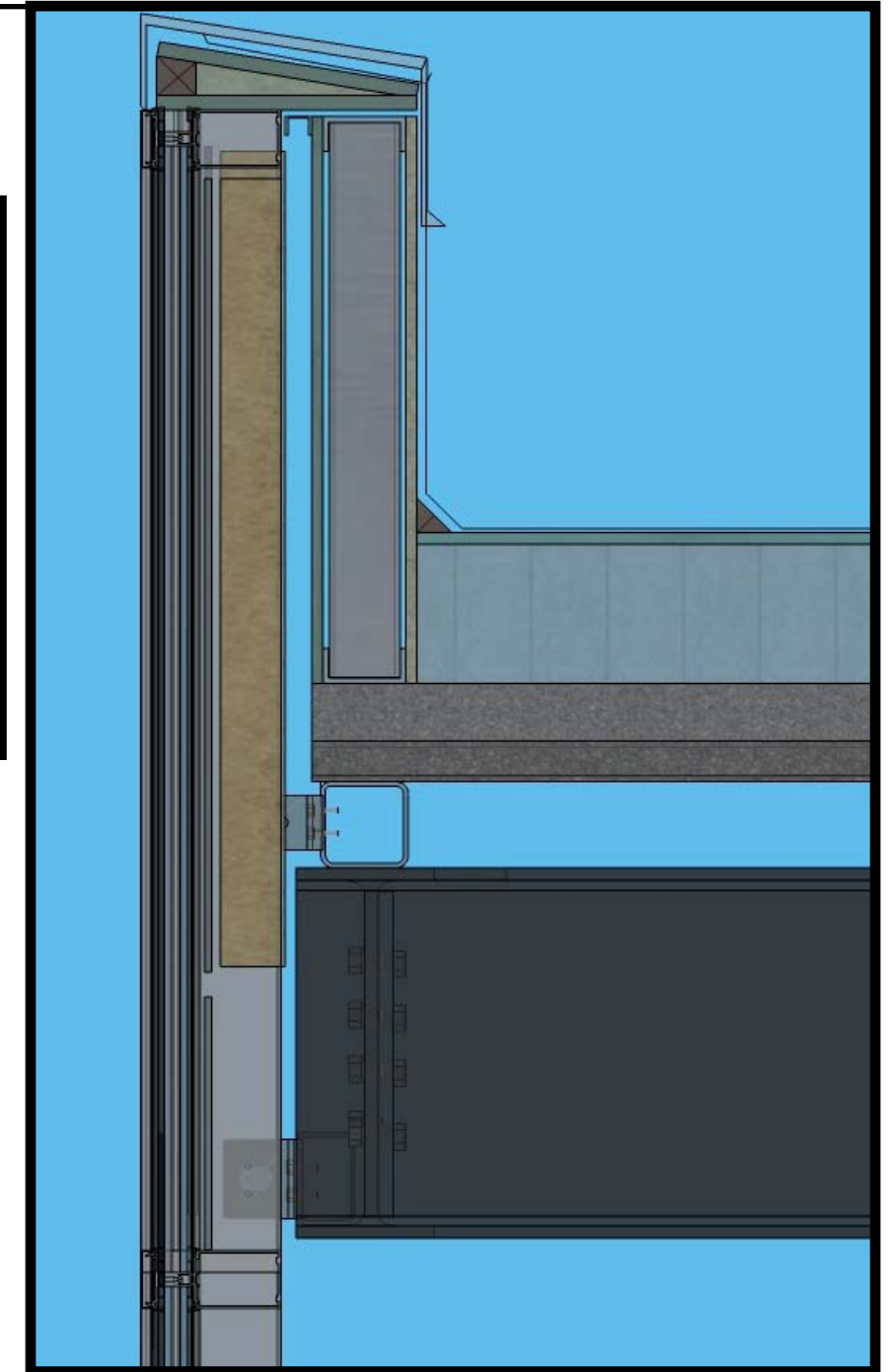
SCALE : 1:50



CURTAIN WALL AT FOOTING



SECTION AT OWSJ

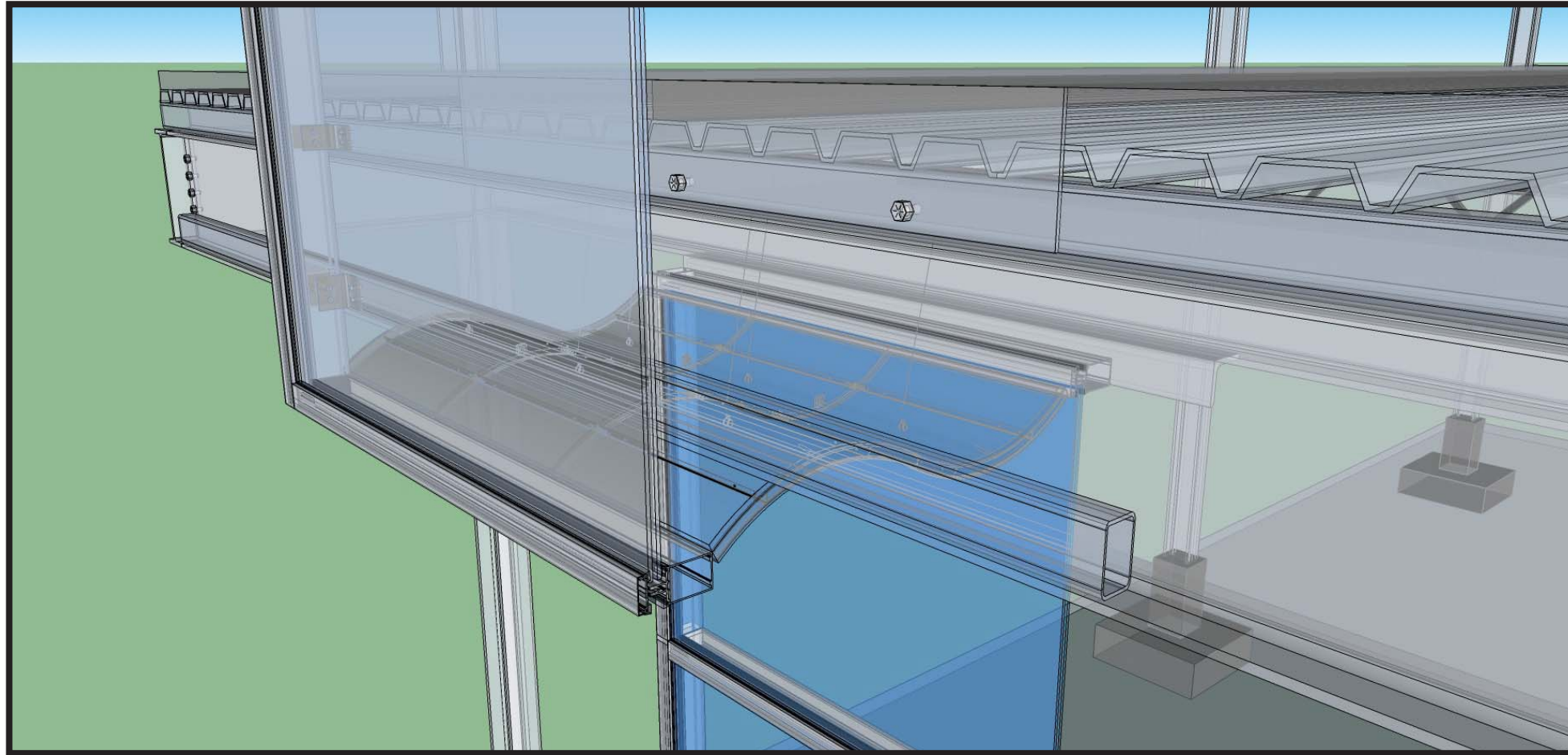


CURTAIN WALL AT PARAPET

SCALE : 1:25

STRUCTURES FOR ARCHITECTS I

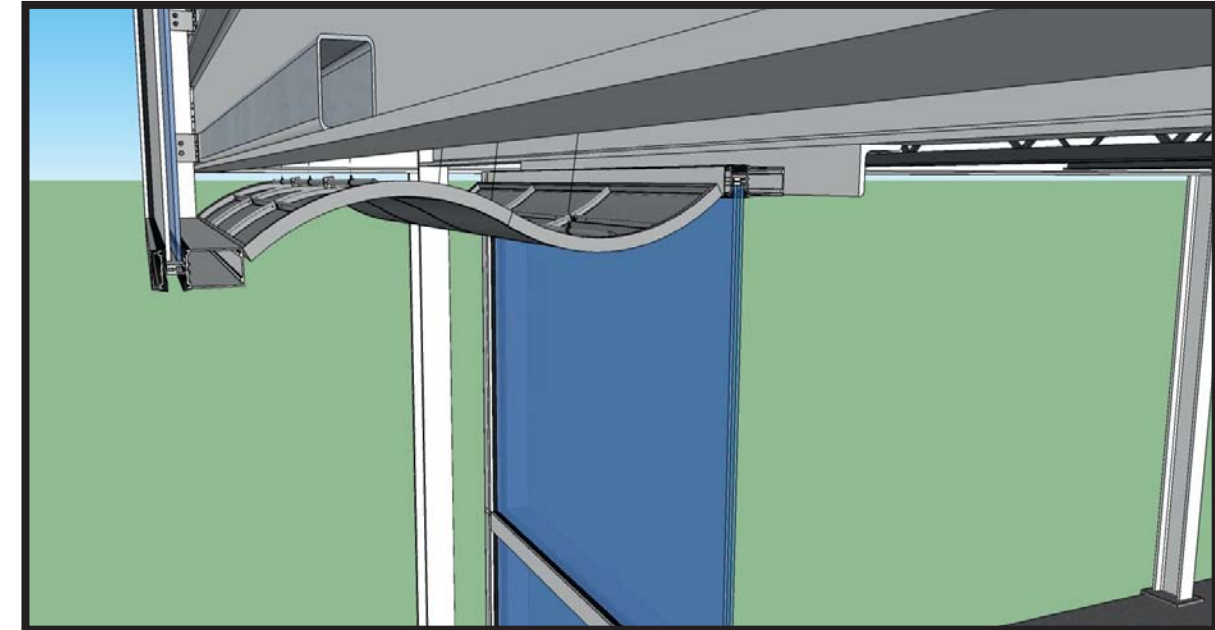
CONNECTIONS DETAILS



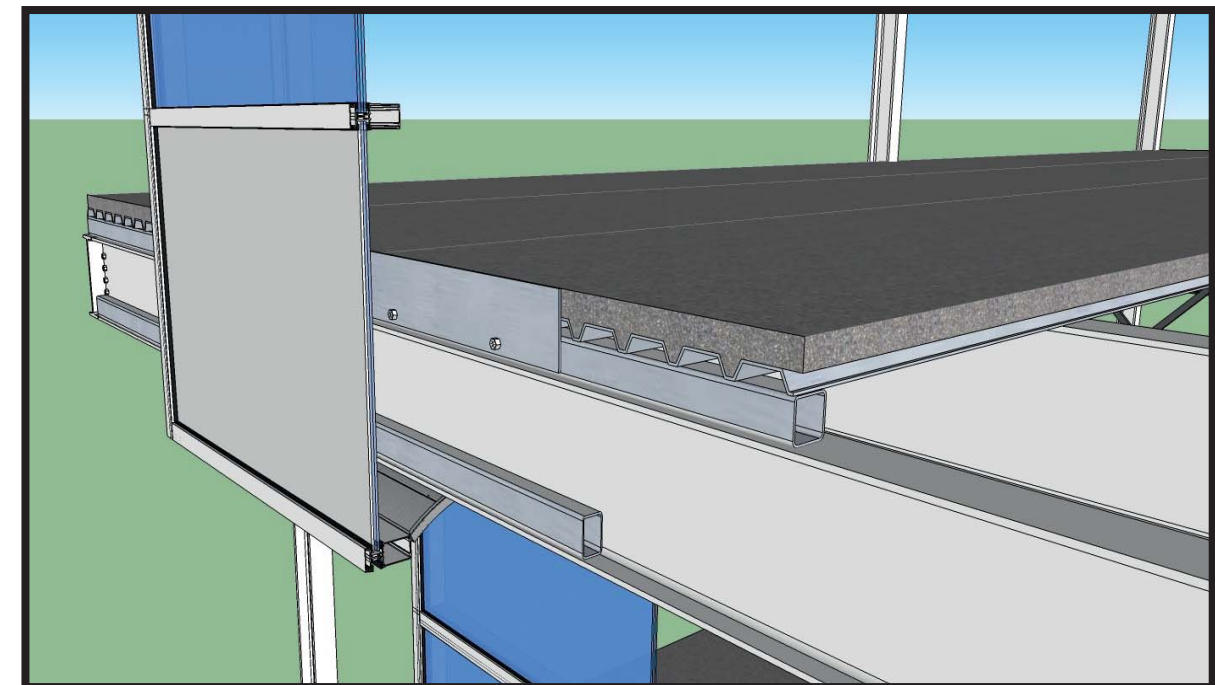
CURTAIN WALL AT SOFFIT - XRAY

TYPICAL FLOOR CONSTRUCTION :

- 102 mm CONC. SLAB ON
- 38 mm METAL DECKING
- 355 O.W.S.J. (OPEN WEB STEEL JOIST) 200 mm O.C.
- 41 METAL FURRING @ 610 O.C. PERP. TO METAL CHANNELS
- 16 TYPE 'X' GYPSUM BOARD



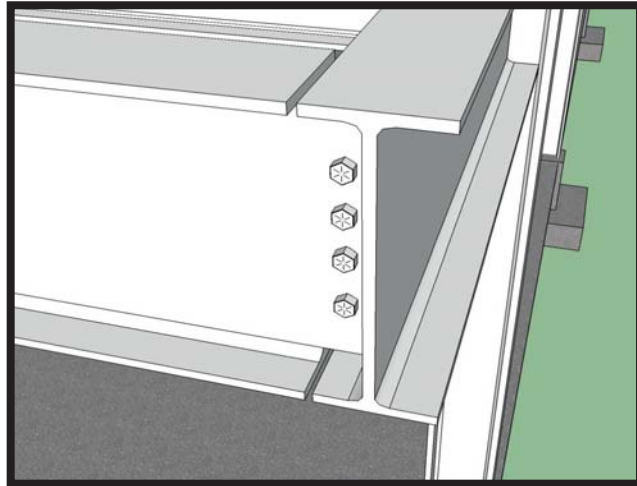
SOFFIT DETAIL



CURTAIN WALL AT SOFFIT

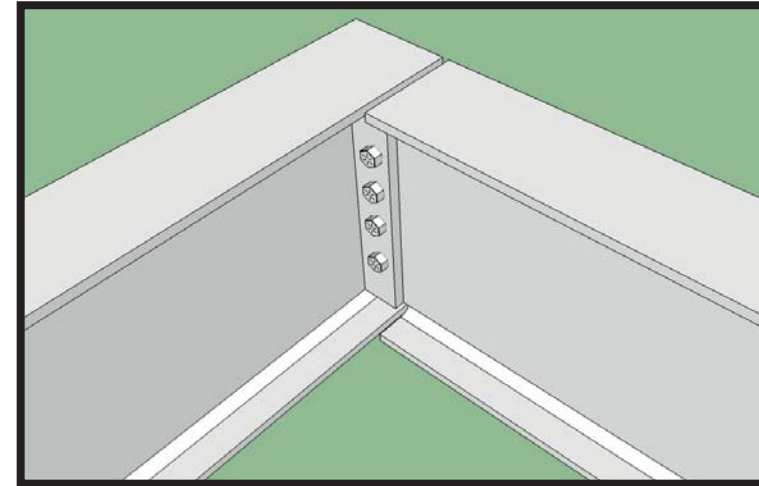
STRUCTURES FOR ARCHITECTS I

CONNECTIONS DETAILS



BEAM TO BEAM CONNECTION A

SCALE : NTS

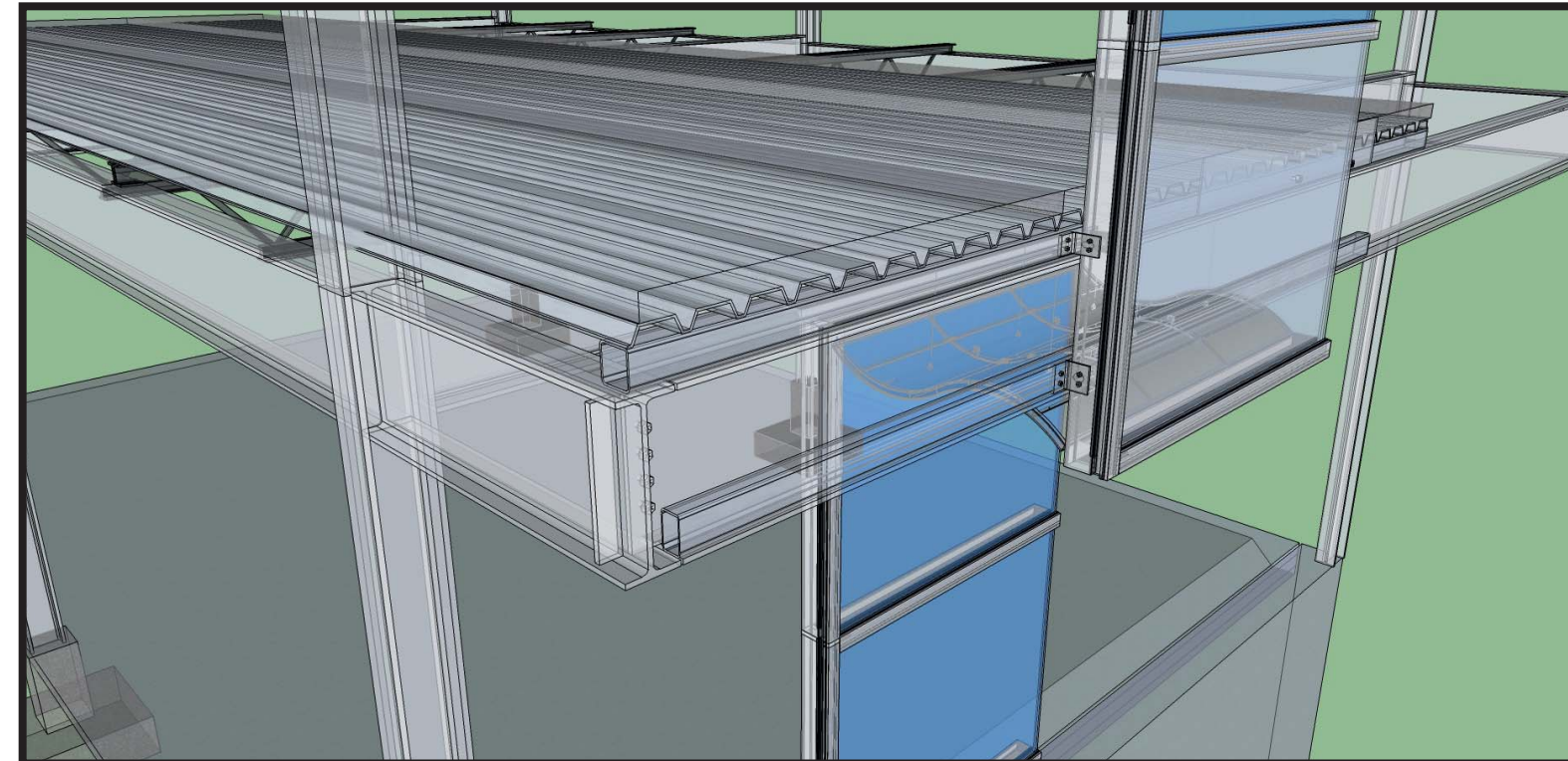


BEAM TO BEAM CONNECTION B

SCALE : NTS



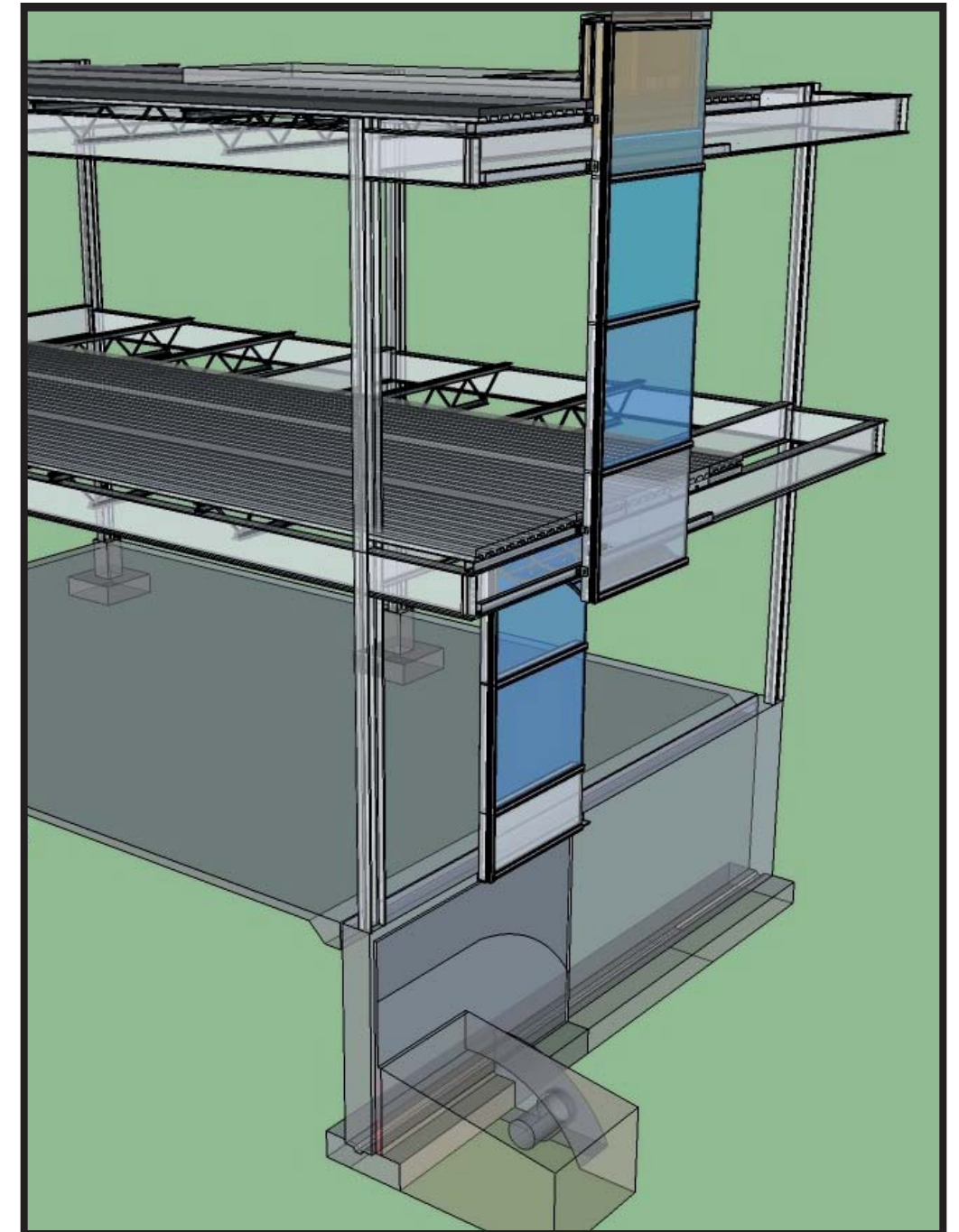
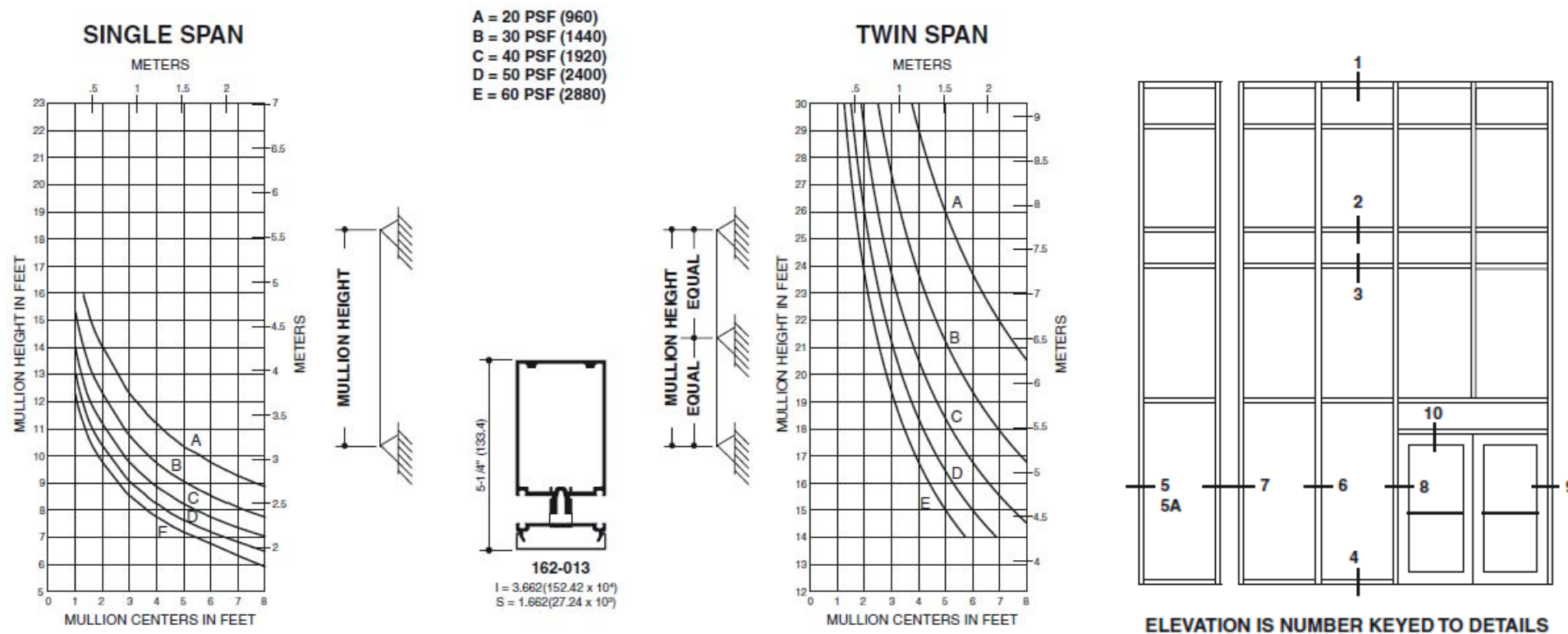
3D CORNER DETAIL



3D CORNER DETAIL - XRAY

STRUCTURES FOR ARCHITECTS I

Assignment ii



In this assignment I am demonstrating my thorough understanding of steel systems. The curtain wall shown in this model is based on Kawneer product 1600 S1, model number : EC 97911-21 (Please See the attached link below)*

http://www.kawneer.com/kawneer/north_america/catalog/pdf/1600_Wall_Sys1__E--A.pdf

The Following assumptions were made:

Project is location: Calgary, Alberta

Load catagory : light to meduim

Roof is accessible and is sized accordingly

***Product reference :** http://www.kawneer.com/kawneer/north_america/catalog/pdf/1600_Wall_Sys1__E--A.pdf